

January 2025

**ELIZABETH BALDWIN
ELEMENTARY SCHOOL**

PAWTUCKET, RI

SHAWMUT



Baldwin Elementary School

2025
Happy New Year

January

Winter Unplug Ideas:

Take a Family Walk

Play a Board Game

Arts & Crafts Night

Go to the Library

Bundle Up and Go for a Hike





We are almost done installing your new elevator!

Who invented the first elevator?

The elevator concept was invented in 236 B.C. by a Greek mathematician called Archimedes. It was primitive but the idea was there. It was operated by hoisting ropes around a drum. The ropes were connected to a revolving cylinder and rotated by hand. It was originally used to lift water for crops.

Some say that several ancient civilizations have used a type of elevator system. Elevators have evolved since then but it's basically still a vertical transport system.

We are in the last stages of the elevator installation and are very excited.

Let's look at some of the pictures along the way.



Elevator car



Elevator buttons



Elevator track



What are VAVs?

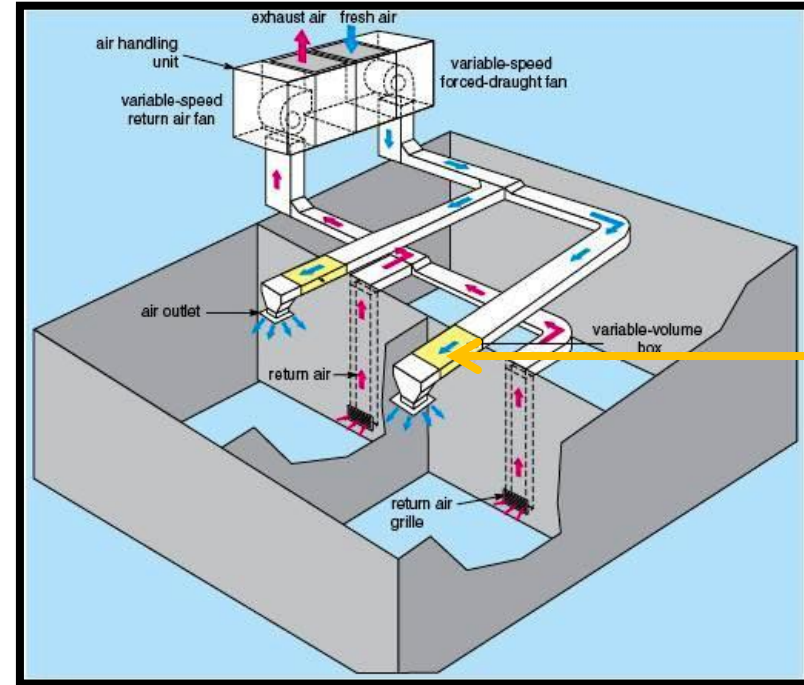


In previous presentations, we have discussed some of the mechanical equipment installed to make this building functional and comfortable including what is on the school roof and how things are connected behind the walls.

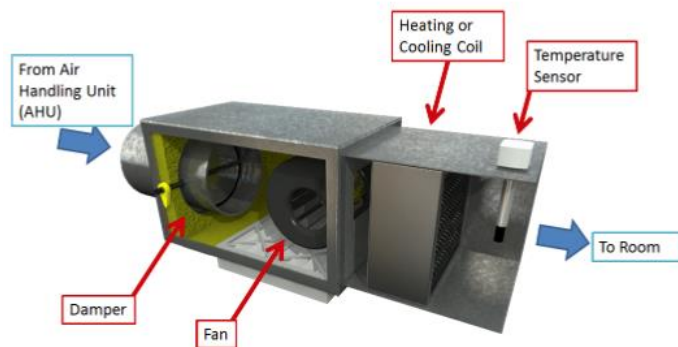
There is a ton of ductwork and pipes that connect the equipment to the actual school spaces.

We recently installed VAV (Variable Air Volume) boxes which are also part of the HVAC system. This is a sheet-metal box that controls the volume and sometimes the temperature of air entering a specific space. They are connected to a thermostat that controls the air flow into that room and can be programmed to adjust to what that space requires.

Take a look at the diagram that explains how this works.



VAV Box



Cold Climate & Construction



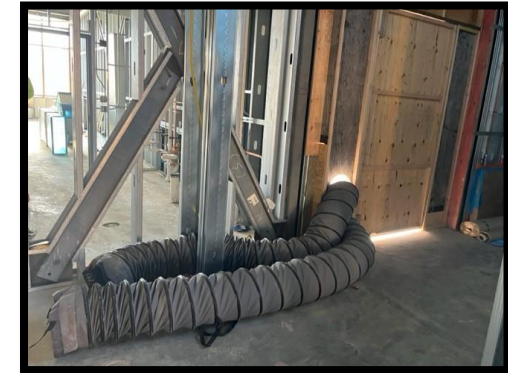
In New England, we face many challenges during the winter months.

In cold climates, construction projects face significant issues because of freezing temperatures including worker safety, concrete problems, adhesive and paint complications and exterior masonry difficulties.

We prepare ahead of the winter months and check the weather weekly so that our teams are safe, and we can continue working around weather constraints.

Recently we held a meeting onsite called "Toolbox Talk" where the team discussed winter conditions and safety with all of the onsite teams.

We are making sure that there are temporary enclosures where the building is not completely enclosed, we are providing temporary heat inside the building so that the workers can continue working, we remove snow and ice and also have insulated blankets to maintain desired temperatures for materials.



Inspect Jobsite Regularly

Proper Winter PPE
(personal protective equipment)

Monitor Weather Conditions

Snow & Ice Removal

Stay Hydrated

Drink Warm Beverages

Drive Safe

Take Breaks



School Highlights

Here are the current highlight pictures of the outside view of the school.

This month, the highlights are from all sides of the building so you can see the progress and the different designs on each side.

