

November 2024

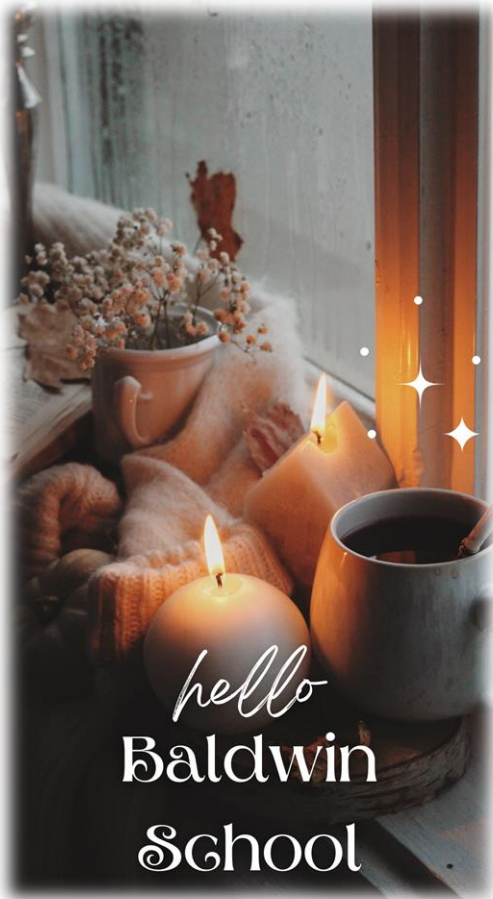
**ELIZABETH BALDWIN
ELEMENTARY SCHOOL**

PAWTUCKET, RI

SHAWMUT



Baldwin Elementary School



Showing gratitude ideas:

- Compliment a friend**
- Send a thank you note**
- Donate a toy**
- Smile at your teacher**
- Say hi to someone new at lunch**



What does weathertight mean?

In Rhode Island, our weather changes often with winter being the hardest construction time of year.

Having your school **weathertight** prior to the winter is very important.

A building is weathertight when it can protect the inside from the weather, including wind, rain and snow. It must be sealed to prevent moisture and air from entering that could cause permanent building damage.

Here are some of the things that we are doing to ensure the building is protected.



Insulation

Siding/Wall Panels

Waterproofing

Weather barriers

Layers of roofing materials

Wall Flashing

Window/Door Sealant

Seal cracks and joints

Roof Drains

Downspouts



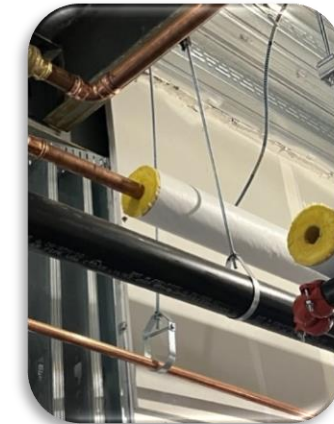
Why is insulation important?

Insulation is material used to stop heat, electricity or sound from spreading from one area to another. A major form is thermal insulation which refers to the use of materials to reduce the transfer of heat between spaces.

It is used in many aspects of your school's building process. There is insulation in the walls, floors, ceilings and also around the ductwork and plumbing pipes.

Insulation provides energy savings, environmental benefits, soundproofing, fire protection and moisture prevention to name a few reasons why it's so important.

Take a look at some examples.



What is installed on the school roof?

On school roofs, we think of protecting the school from the elements like rain, snow, wind and sunlight. These are very important on every house or building. What we don't think of is the type of equipment that is installed on the roof and why.

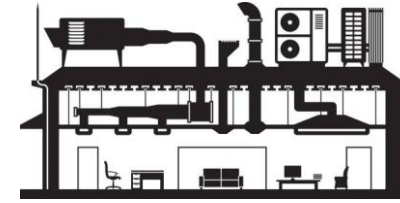
At Baldwin, we have installed very LARGE and important mechanical pieces of equipment that are used for heating, ventilation and air conditioning (HVAC). They provide heating and cooling to the building by drawing in outside air, filtering it, and then distributing conditioned air throughout the school via ductwork. The larger units weight approximately 9600 lbs!

Also, there is a Make-up Air Unit (MAU) that helps with the school's ventilation system. It provides fresh air to the inside of the building and prevents the build-up of indoor air contaminates. It replaces the air lost by the kitchen exhaust fans which are also on the roof.

Take a look at some of the photos taken on the school roof.



If you can imagine, these units were lifted to the roof on a crane!



Installing equipment on roofs helps to minimize space taken up inside the building and for easy maintenance access.

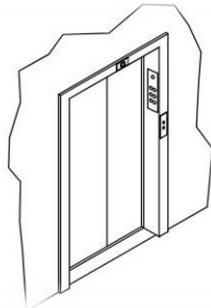


Baldwin will be getting an elevator soon!



There are many things that go into your new elevator.

We started the first stage of the elevator at the very beginning of this project. The shaft of the elevator is the backbone of the structure. It is the tall enclosed space that helps the elevator move up and down safely. It houses the elevator and it's moving parts.

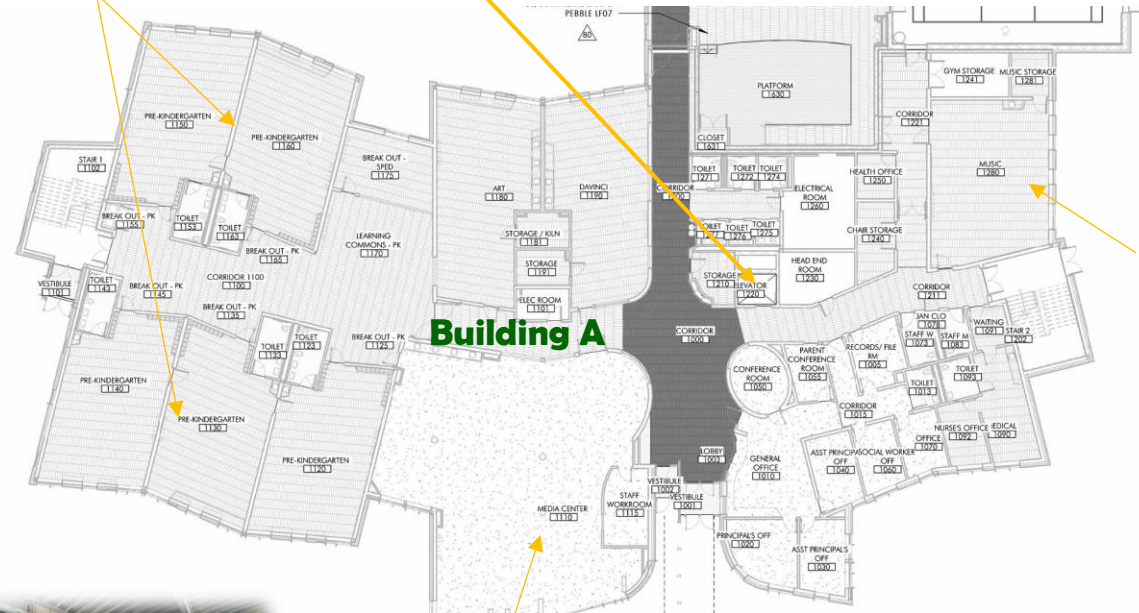


The elevator cabin navigates the building on tracks between floors.

This is where your elevator will be located in the school.



Pre-K



Music

Building A

Media Center



School Highlights

Here are the highlight pictures of the outside view of the school.

We have kicked into high gear installing the exterior windows and panels one building at a time.

Take a look at this rendering that shows the design of these areas.

